

# EUREKA 606

Laser System



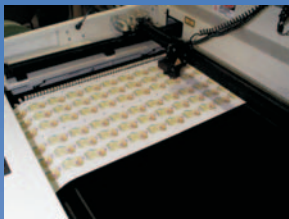
EUREKA 606 CO<sub>2</sub>



LA TECNOLOGIA LASER ITALIANA NEL MONDO

COMPANY  
WITH QUALITY MANAGEMENT  
SYSTEM CERTIFIED BY DNV  
=ISO 9001:2000=

## EUREKA 606



SEI S.p.A. reserves the right to change the technical data and photos without any previous notice.

**Eureka 606**, designed and manufactured by SEI S.p.A. is a laser system for raster marking and vector cutting. Eureka is equipped with CO<sub>2</sub> sealed laser sources and matches a new design with high technology for slab and roll materials.

Eureka, thanks to its flexibility and its outstanding performances is a professional productive unit for application in different fields such as sign-marking, inlaying, paper, leather, converting etc.

Eureka is a unique system with a very accurate movement based on high quality brushless motors and a new algorithm. The basic model with its rich list of options (CCD camera system, double head, rotary attachment conveyor etc.) and thanks to its outstanding performances of high speed and acceleration is a complete center for laser applications.

Materials such as acrylic, polyester, glass, wood, leather and rubber are easily processed.

Eureka, has a wide upper front panel. However, the loading/ unloading operations especially for materials with bigger sizes are easily carried out by removing the front and rear panels. Materials, even roll materials are easily moved by a conveyor, available as an option.

The work table disposes of a useful work surface 610x460 mm and a max. 254 mm port. Materials with a max. 760x540 mm size and a max. weight of 20 kgs. are processed.

Eureka, is a Class 1 product and it complies with international safety standards (CE, CDRH, IEC825).

### TECHNICAL SPECIFICATIONS

Work area:	610x460x254 mm / 24x18x10 inches
Work support:	760x540 mm / 30x22 inches
Overall dimensions WxLxH:	1180x1060x1220 mm / 46x42x48 inches
Servo controlled Z axis table:	UP-DOWN 254 mm / 10 inches
Maximum material load:	20 Kg.
Machine weight:	170 Kg.
Sheet material maximum width:	1.000 mm / 39 inches rear and front panels removable
X Y maximum raster and vector speed:	1200 mm/s (2000)
X Y maximum vectorial raster speed:	Raster: 2000 mm/s
Acceleration:	2G
Repeatability:	+/- 0,1 mm on the whole area
Motorisation:	+/- 0,05 mm
Up to 5 axis control system	X Y gantry with brushless motors (flying optics) X, Y, Z, rotary attachment, conveyor
Interface:	RS 232/C - NETWORK - HIGH SPEED SERIAL BUS
*Control:	Required external IBM compatible PC- Win.98/2000/XP, "ICARO" CAM SW
WINDOWS BASED CAM ICARO:	DSP interface - file manager library and optimization
Power supply:	110-230V single phase 50-60 Hz
Compressed air:	25-50 l/min. 5 bar (max)
Operating temperature:	10+40° C
Relative operating humidity:	10+85% RH max, non-condensing
Storage temperature:	-10+70° C (H <sub>2</sub> O empty circuit)
**Suction:	UPPER/LOWER independently settable system
Work area lighting:	Internal neon lamps lighting system
Safety:	Class 1 safety enclosure (standard) Class 4 safety enclosure when front and rear panels removed
Laser sources available - CO <sub>2</sub> sealed:	25, 30, 40, 60, 100LP, 115W
Laser cooling system:	Air for laser 25, 30, 40W - water for laser 60, 100LP, 115W
Focal units:	2" (standard), 1,5", 3" (option)
Focusing system:	Computer controlled and programmable (servo controlled Z axis)
Warranty:	1 year (second year option), unlimited hours.
MTBF:	In accordance with the laser source/ manufacturer but over 20,000 hours
Main options:	Additional head ( dual), conveyor, unwinding system, CCD camera registration, single, dual rotary attachment, high payload table, suction, filtering systems, special software packages.
* PC not included.	
** SUCTION PUMP not included.	

**SEI** S.p.A.

Via Ruffilli, 1 24035 Curno (BG) Italy tel. ++39 0354376016  
fax ++39 035463843 <http://www.seilaser.com> e-mail: [info@seilaser.com](mailto:info@seilaser.com)